

ULTIME D Patented

metalfire

Technical Document

ULTIME D MF 800-50 WHE 3S V20

Dimensions (mm)

- combustion opening WxHxD: 868x441x504
- external WxDxH: 868x600x1443
- fresh air: 2xØ150
- diameter flue: Ø250

Technical Data

- Ecolabel: A+
- capacity: 16kW
- efficiency capacity: 82%
- CO (volume with 13%O₂): 0.061%
- dust (volume with 13%O₂): 23.6mg/Nm³
- weight: 320kg
- Air intake to convection: minimum 720cm²(4xØ150)
- Air exhaust to convection: minimum 720cm²(4xØ150)

Specifications

- inside finishing: heat-resistant black paint
- vermiculite insulation plates
- convection jacket in galvanized steel
- back and sides: ribbed cast iron
- interior finishing: ORIGINAL (ribbed cast iron)

Options

- Finishing frame

Table: prescribed insulation thickness (mm)

Combustable finishing material				
	A	B	C	D
Test report (TC = 0,14 W/mK)	25	25	25	25
Non-combustable finishing material				
non-combustable materials (structural building items EXCLUDED e.g. load bearing walls)	0	0	0	0
TC = thermal conductivity NC = non-combustable				

First aid and technical support:

- support@metalfire.eu
- +32 (0)9 261 50 57

scale 1:20

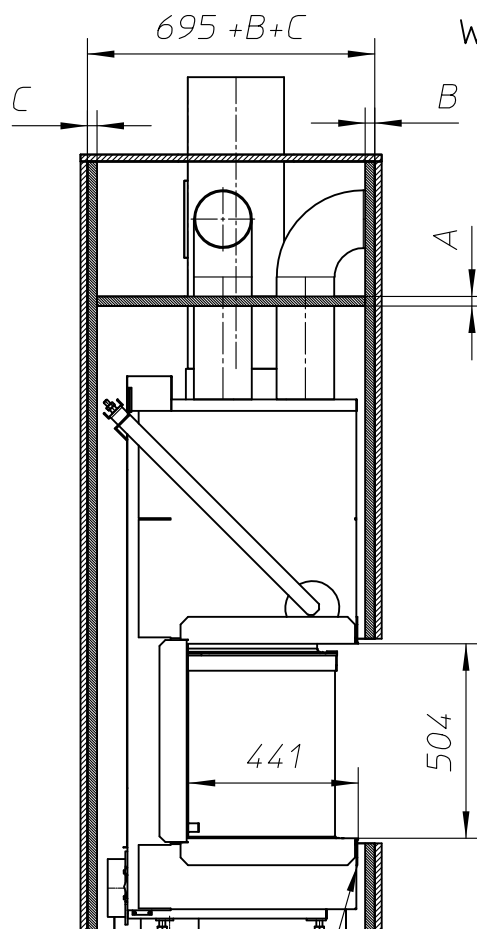
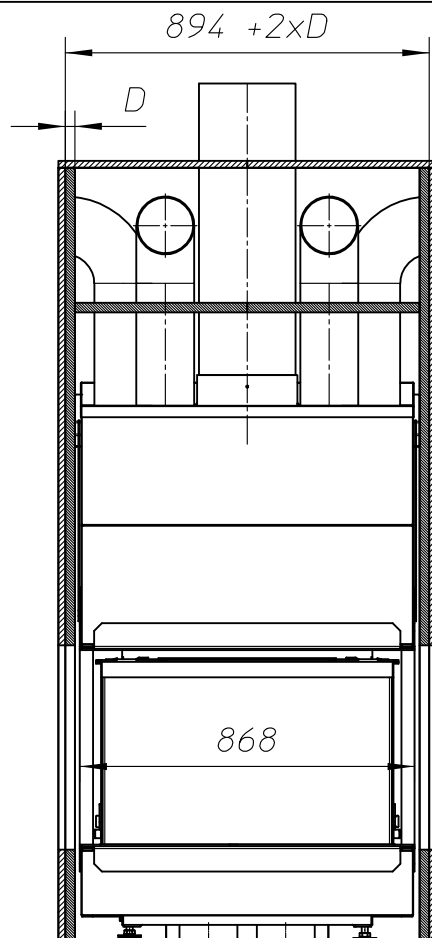
Rev.
-

www.metalfire.eu EN 13229

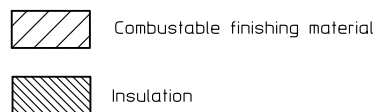
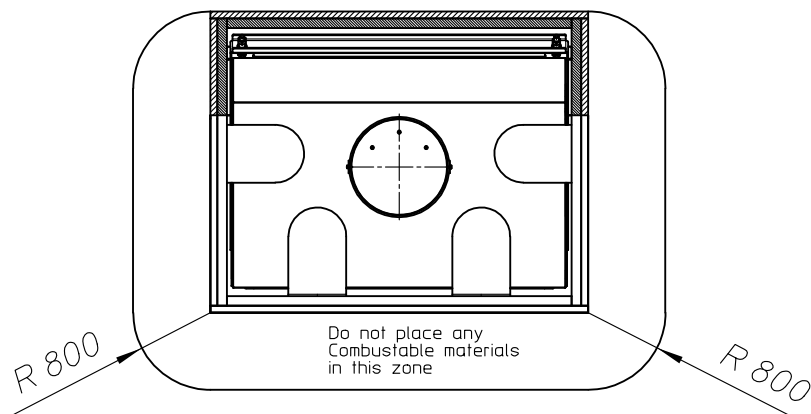
CE

General dimensional tolerances up to 6mm
Metalfire preserves the right to modify specifications without previous notice

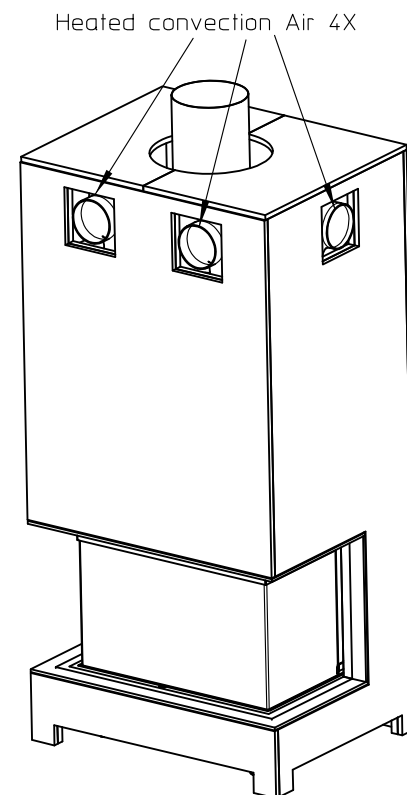
Sheet
1/5



WITHOUT FINISHING FRAME



Min. 13mm between fireplace and insulation



ULTIME D Patented

metalfire

Technical Document

ULTIME D MF 800-50 WHE 3S V20

Dimensions (mm)

- combustion opening WxHxD:	868x441x504
- external WxDxH:	868x600x1443
- fresh air:	2xØ150
- diameter flue:	Ø250

Technical Data

- Ecolabel:	A+
- capacity:	16kW
- efficiency capacity:	82%
- CO (volume with 13%O ₂):	0.061%
- dust (volume with 13%O ₂):	23.6mg/Nm ³
- weight:	320kg
- Air intake to convection: minimum	720cm ² (4xØ150)
- Air exhaust to convection: minimum	720cm ² (4xØ150)

Specifications

- inside finishing: heat-resistant black paint
- vermiculite insulation plates
- convection jacket in galvanized steel
- back and sides: ribbed cast iron
- interior finishing: ORIGINAL (ribbed cast iron)

Options

- Finishing frame

Table: prescribed insulation thickness (mm)

Combustable finishing material				
	A	B	C	D
Test report (TC = 0,14 W/mK)	25	25	25	25
Non-combustable finishing material				
non-combustable materials (structural building items EXCLUDED e.g. load bearing walls)	0	0	0	0
TC = thermal conductivity NC = non-combustible				

First aid and technical support:

- support@metalfire.eu
- +32 (0)9 261 50 57

scale 1:20

www.metalfire.eu EN 13229

General dimensional tolerances up to 6mm
Metalfire preserves the right to modify specifications without previous notice

Rev.
-

CE

Sheet
2/5

WITH FINISHING FRAME 90/10

ULTIME D_{Patented}

metalfire

Technical Document

ULTIME D MF 800-50 WHE 3S V20

Dimensions (mm)

- combustion opening WxHxD: 868x441x504
- external WxDxH: 868x600x1443
- fresh air: 2xØ150
- diameter flue: Ø250

Technical Data

- Ecolabel: A+
- capacity: 16kW
- efficiency capacity: 82%
- CO (volume with 13%O₂): 0.061%
- dust (volume with 13%O₂): 23.6mg/Nm³
- weight: 320kg
- Air intake to convection: minimum 720cm² (4xØ150)
- Air exhaust to convection: minimum 720cm² (4xØ150)

Specifications

- inside finishing: heat-resistant black paint
- vermiculite insulation plates
- convection jacket in galvanized steel
- back and sides: ribbed cast iron
- interior finishing: ORIGINAL (ribbed cast iron)

Options

- Finishing frame

Table: prescribed insulation thickness (mm)

Combustable finishing material				
	A	B	C	D
Test report (TC = 0,14 W/mK)	NC	40	70	50
Non-combustable finishing material				
non-combustable materials (structural building items EXCLUDED e.g. load bearing walls)	0	0	0	0
TC = thermal conductivity NC = non-combustible				

First aid and technical support:

- support@metalfire.eu
- +32 (0)9 261 50 57

scale 1:20

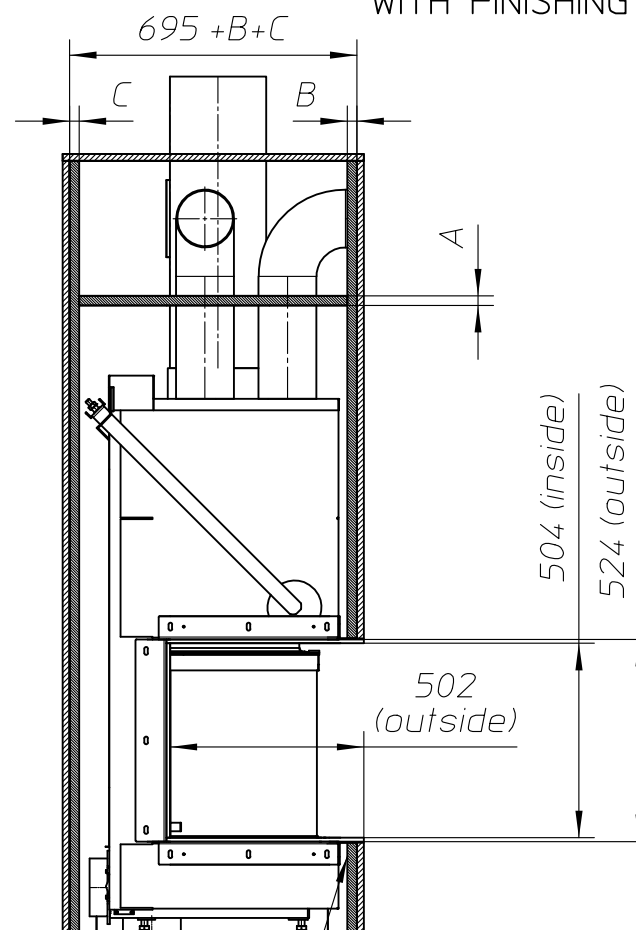
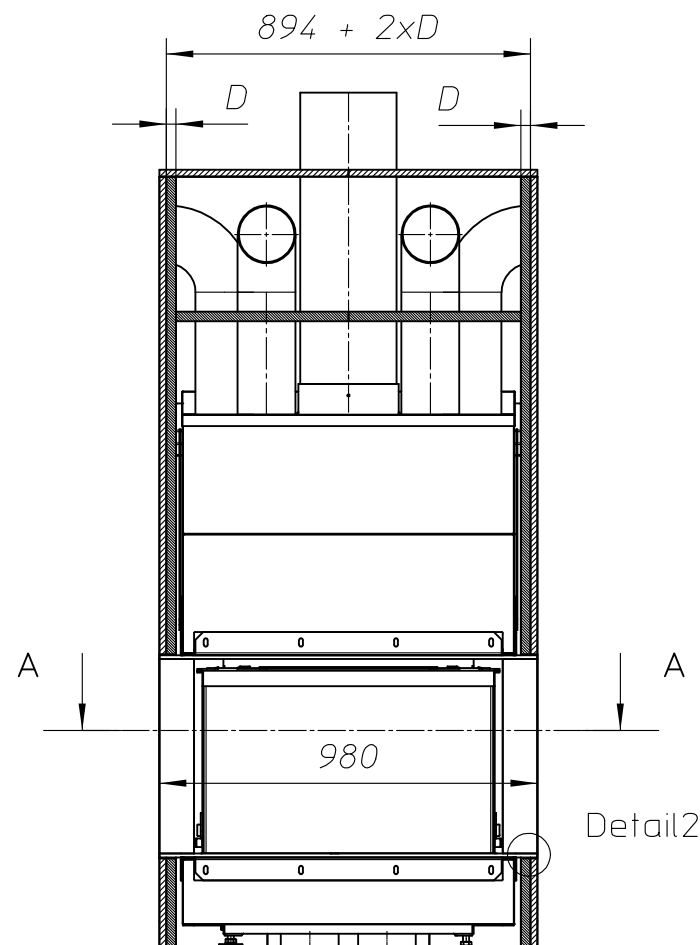
www.metalfire.eu EN 13229

General dimensional tolerances up to 6mm
Metalfire preserves the right to modify specifications without previous notice

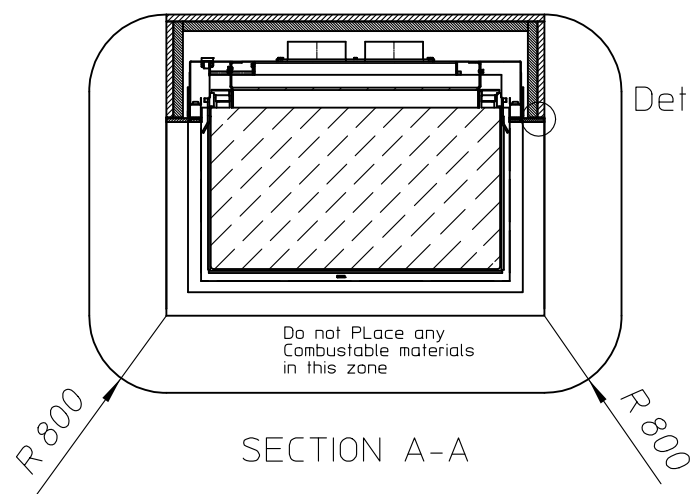
Rev.
-

CE

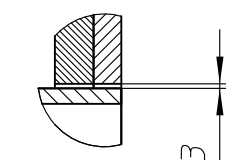
Sheet
3/5



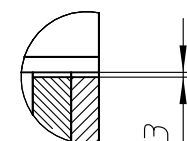
Min. 13mm between fireplace and insulation



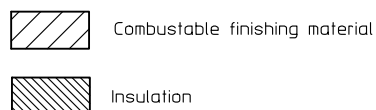
Detail 1



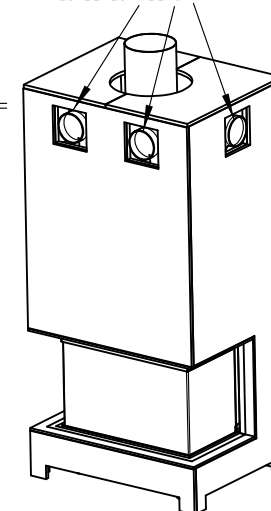
Detail1
Scale 1:5



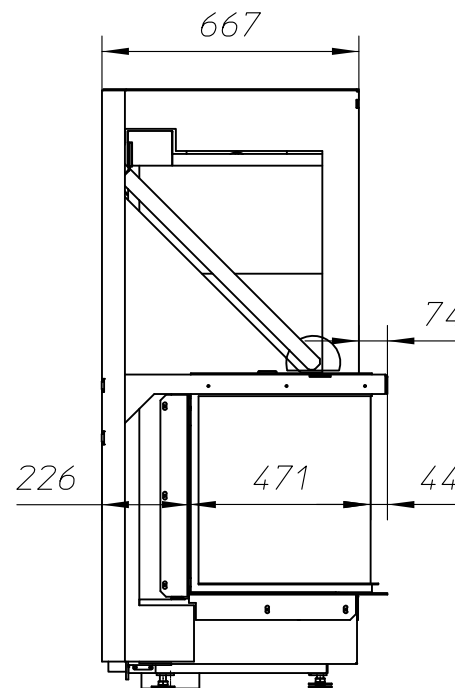
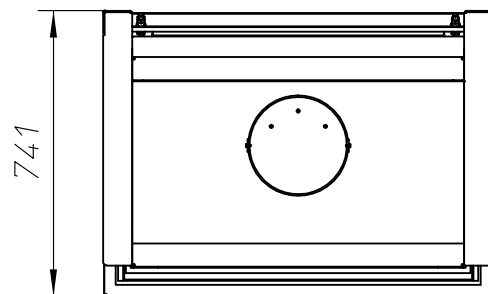
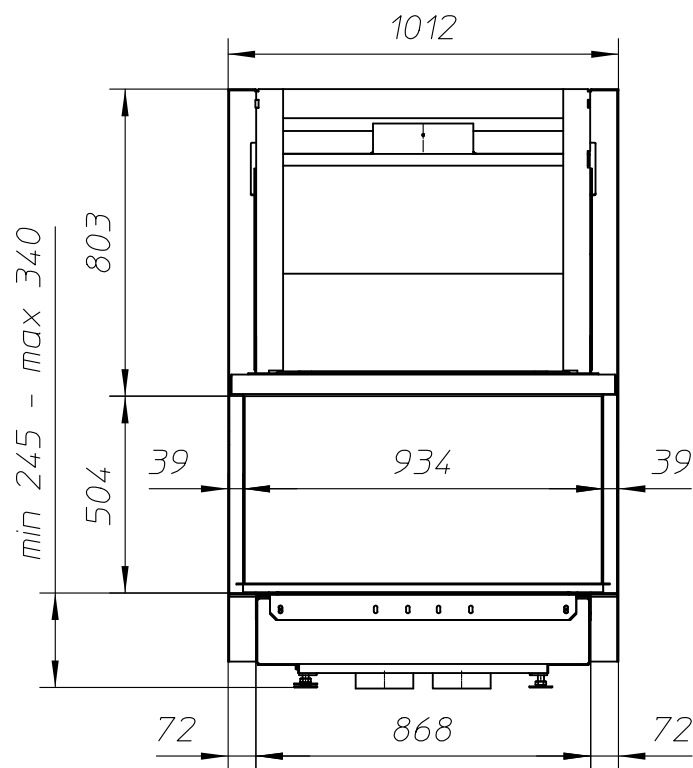
Detail2
Scale 1:5



Heated convection Air 4X



WITH FIRESCREEN - NO FINISHING FRAME



ULTIME D Patented

metalfire

Technical Document

ULTIME D MF 800-50 WHE 3S V20

Dimensions (mm)

- combustion opening WxH: 868x504x441
- external WxDxH: 1012x741x1443
- fresh air: 2xØ150
- diameter flue: Ø250

Technical Data

- capacity: 16kW
- efficiency capacity: 82%
- CO (volume with 13%O₂): 0.061%
- dust (volume with 13%O₂): 23.6mg/Nm³
- weight: 320kg
- Air intake to convection: minimum 720cm²(4xØ150)
- Air exhaust to convection: minimum 720cm²(4xØ150)

Specifications

- inside finishing: heat-resistant black paint
- vermiculite insulation plates
- convection jacket in galvanized steel

First aid and technical support:

- support@metalfire.eu
- +32 (0)9 261 50 57

scale 1:20

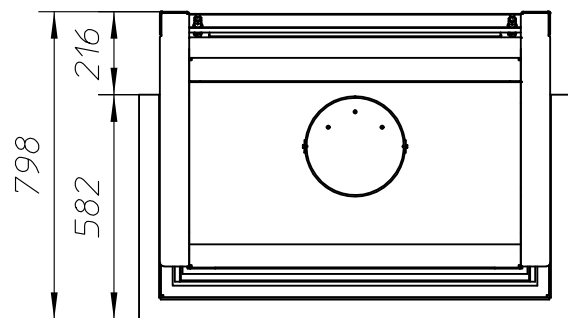
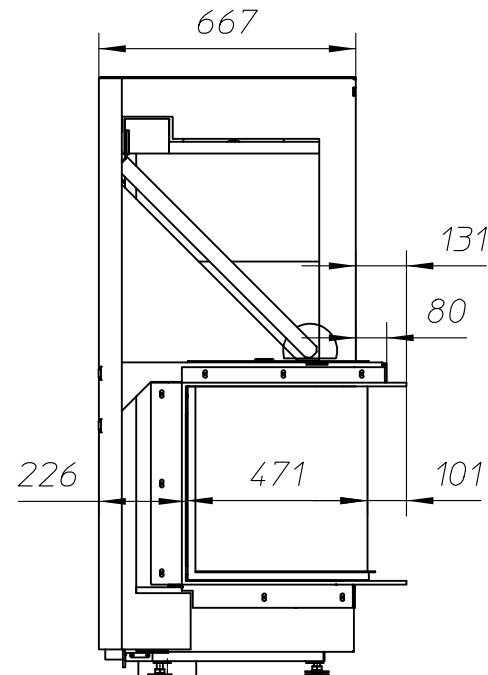
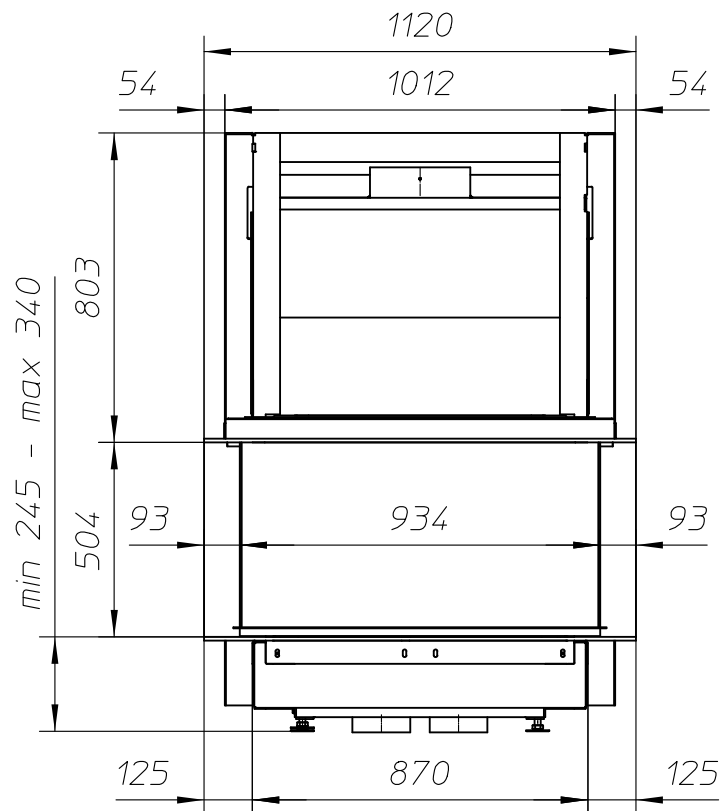
Rev.
-

www.metalfire.eu EN 13229

CE

General dimensional tolerances up to 6mm
Metalfire preserves the right to modify specifications without previous notice

Sheet
4/5



ULTIME D

Patented

metalfire

Technical Document

ULTIME D MF 800-50 WHE 3S V20

Dimensions (mm)

- combustion opening WxH: 868x441x504
- external WxDxH: 1120x798x1443
- fresh air: 2x \varnothing 150
- diameter flue: \varnothing 250

Technical Data

- capacity: 16kW
- efficiency capacity: 82%
- CO (volume with 13%O₂): 0.061%
- dust (volume with 13%O₂): 23.6mg/Nm³
- weight: 320kg
- Air intake to convection: minimum 720cm² (4x \varnothing 150)
- Air exhaust to convection: minimum 720cm² (4x \varnothing 150)

Specifications

- inside finishing: heat-resistant black paint
- vermiculite insulation plates
- convection jacket in galvanized steel

First aid and technical support:

- support@metalfire.eu
- +32 (0)9 261 50 57

scale 1:20

Rev.
-

www.metalfire.eu EN 13229

CE

General dimensional tolerances up to 6mm
Metalfire preserves the right to modify specifications without previous notice

Sheet
5/5